

How do I choose a course?

| | |
|---|--|
| Topic | What would you like to learn? What kinds of skills do you need? |
| Goals | What would you like to know after the studies? Are you aiming to learn how to do something yourself or to understand a phenomenon? |
| Level | Are you already familiar with the topic or would you like to start from the basics? |
| Number of courses | How many courses should you apply for at the same time? Consider your schedule and goals, and make a plan. |
| What is the best way for you to learn? | → Online courses, blended teaching, contact teaching → Remote, on campus → Language of studies |

How does FITech's course search work?

From the filters, you can choose, for example, the **topic**, **level**, or **host university**.

From the “**Starting date**” menu, you can see the

- upcoming courses
- continuously ongoing courses
- past courses

With **key words**, you can look for, for example, a topic or a specific course.

Ready to learn?

FITech Network University offers selected studies from all Finnish universities of technology. Update your digital and other skills free of charge. Courses are open and available for everyone from high school students to adults in working life.

Python

Topic Course level Student type Type of study
On campus or online Language Location Host university
Starting date (1)

Clear all

10 results for Python

Courses starting next

University of Oulu **Individual course**
Elementary programming
Programming
Adult learner, Degree student | Online | Beginner | 1-5 ECTS | +
Course period: Continuously on-going
Application deadline: Continuously on-going
Price: 0 €

Aalto University **Individual course**
Johdatus kryptografiaan
Cybersecurity, Information security, Mathematics, Programming
Adult learner, Degree student | Online | Beginner | 2 ECTS | +
Course period: Continuously on-going
Application deadline: Continuously on-going
Price: 0 €

LUT University **Individual course**

LUT University **Individual course**

Explore all courses in our [course search](#)!

What happens after applying for a course?

Application period

Applications are processed at different speeds. If there is still time before the course starts, you may not hear back immediately. Your application was successful if you received a confirmation email from Studyinfo.

Accepting a study place

When you receive an email from Studyinfo stating that you have been granted a study place, **it is advisable to accept it immediately.**

Instructions

After confirming your study place, you will receive instructions **from the host university.** If you have not received instructions before the course starts, inquire the host university's contact person or teacher (see contacts [here](#)).

During the course

If possible, **familiarise yourself in advance with the course platform** (e.g., Moodle) and the materials. **Plan your time management.** For questions related to the course, your primary contact person is the course teacher.

Who can apply?

FItech studies are aimed at **all Finns** and **people permanently living in Finland**.

Some courses are only for **adult learners**, meaning people who are currently not studying at any higher education institution in Finland (university or university of applied sciences). There are also many courses available for **degree students**.

Read more: [FItech | Who can apply?](#)

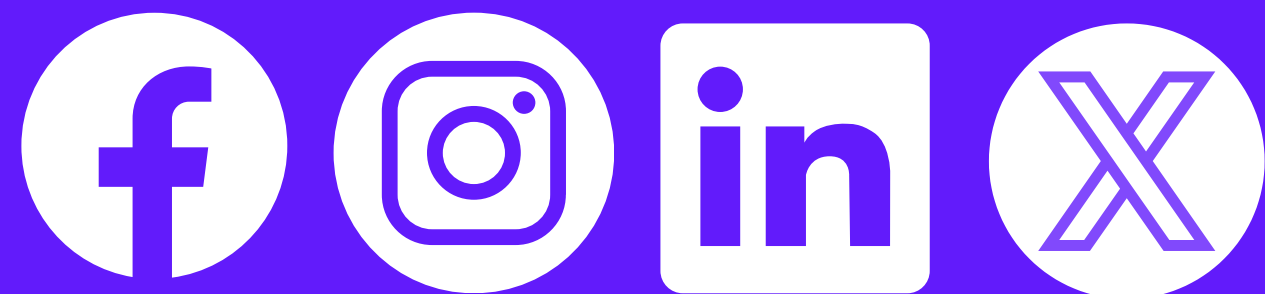
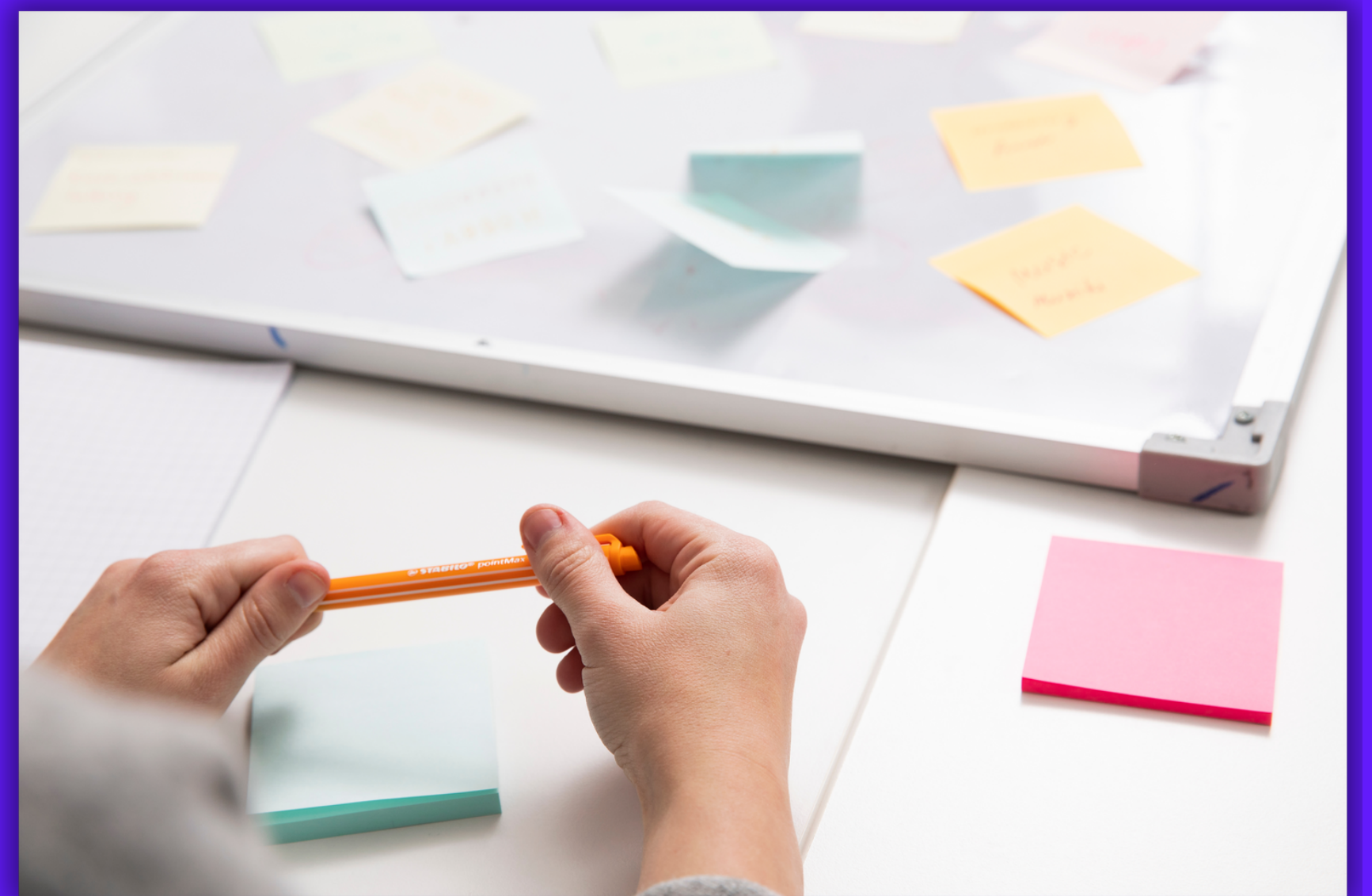


Any questions?

Send us an **email**:
info(at)fitech.io

Fill out the **contact form**:
<https://fitech.io/en/contact/>

Or see the [frequently asked questions](#).



FITECH
NETWORK UNIVERSITY